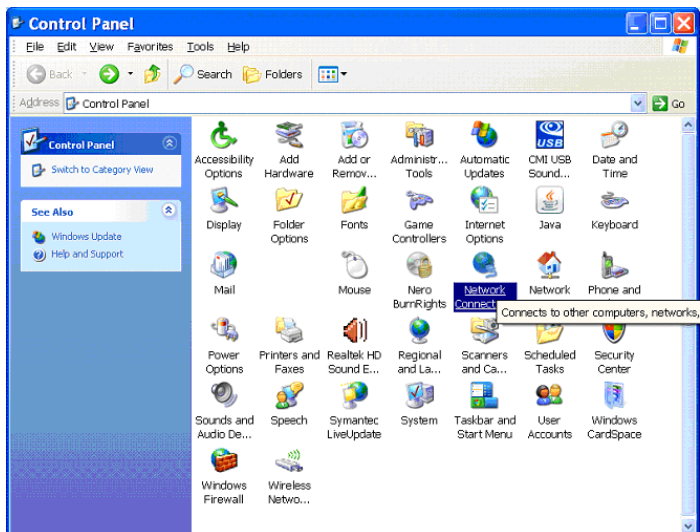


UPUTE ZA KREIRANJE I SPAJANJE PUTEM PPTP VEZE – MS WINDOWS SUČELJE

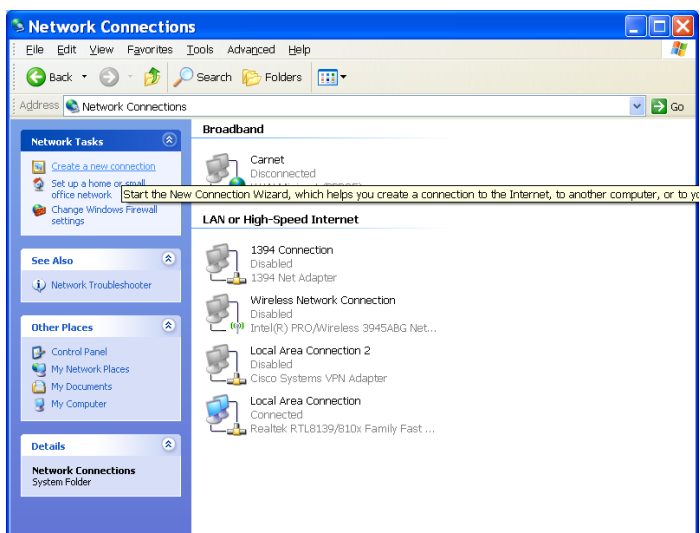
1

Otvorite **Control Panel** (Start-> Settings -> Control Panel) i odaberite **Network Connections**:



2

Kliknite na **Create a new Connection**:



3

Ovdje kliknite **Next**



4Označite **Connect to the network at my workplace** i zatim kliknite **Next**

New Connection Wizard

Network Connection Type
What do you want to do?

- Connect to the Internet**
Connect to the Internet so you can browse the Web and read email.
- Connect to the network at my workplace**
Connect to a business network (using dial-up or VPN) so you can work from home, a field office, or another location.
- Set up a home or small office network**
Connect to an existing home or small office network or set up a new one.
- Set up an advanced connection**
Connect directly to another computer using your serial, parallel, or infrared port, or set up this computer so that other computers can connect to it.

< Back Next > Cancel

5Označite **Virtual Private Network connection** i zatim kliknite **Next**

New Connection Wizard

Network Connection
How do you want to connect to the network at your workplace?

Create the following connection:

- Dial-up connection**
Connect using a modem and a regular phone line or an Integrated Services Digital Network (ISDN) phone line.
- Virtual Private Network connection**
Connect to the network using a virtual private network (VPN) connection over the Internet.

< Back Next > Cancel

6Upišite ime veze (npr: **XCARNet PPTP**)

New Connection Wizard

Connection Name
Specify a name for this connection to your workplace.

Type a name for this connection in the following box.

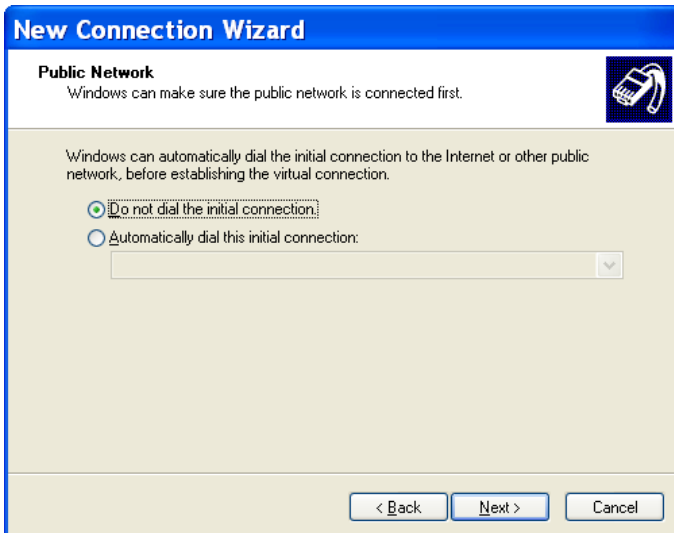
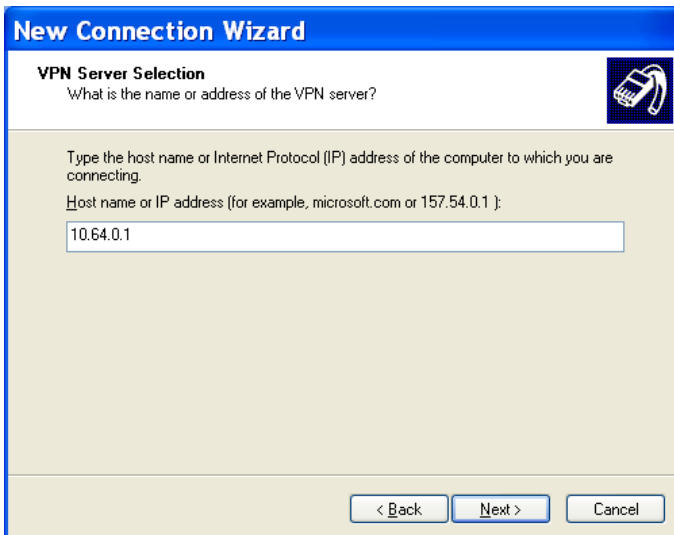
Company Name

Xcarnet PPTP

For example, you could type the name of your workplace or the name of a server you will connect to.

< Back Next > Cancel

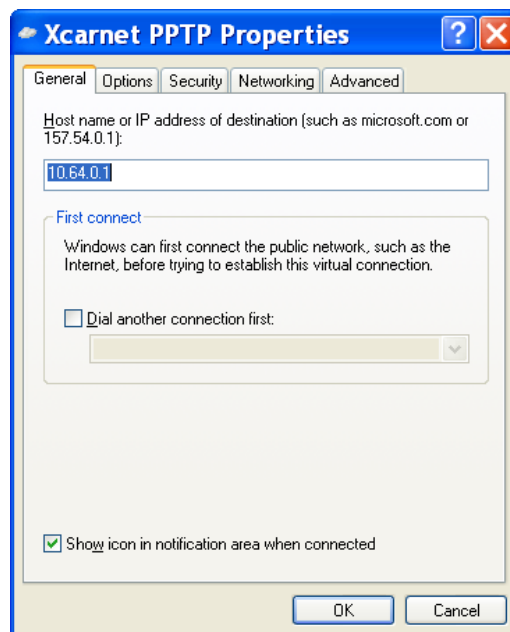


7Označite **Do not dial a initial connection** i zatim kliknite **Next****8**Ovdje upišite **10.64.0.1** i zatim kliknite **Next****9**Kliknite **Finish**

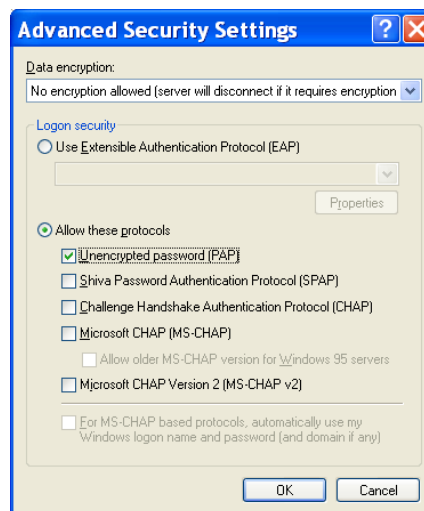
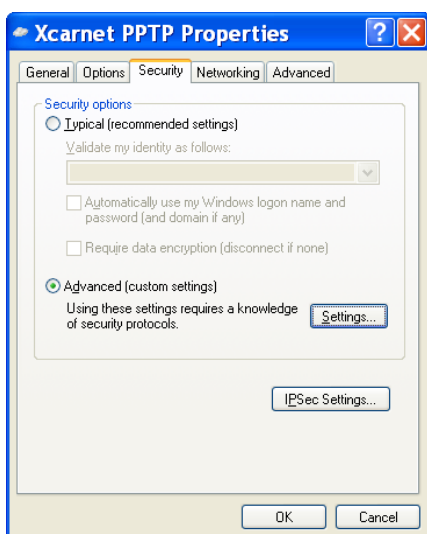
10 Kliknite na **Properties**



11 pa na **Security**



12 Označite **Advanced (Custom settings)** i zatim kliknite na **Settings**



13 U padajućem meniju **obavezno** promijenite dosadašnju opciju u: **No encryption allowed (Server will...)** Nadalje, označite **Unencrypted password (PAP)** i **obavezno** isključite sve ostale opcije!!!
Kliknite **OK**

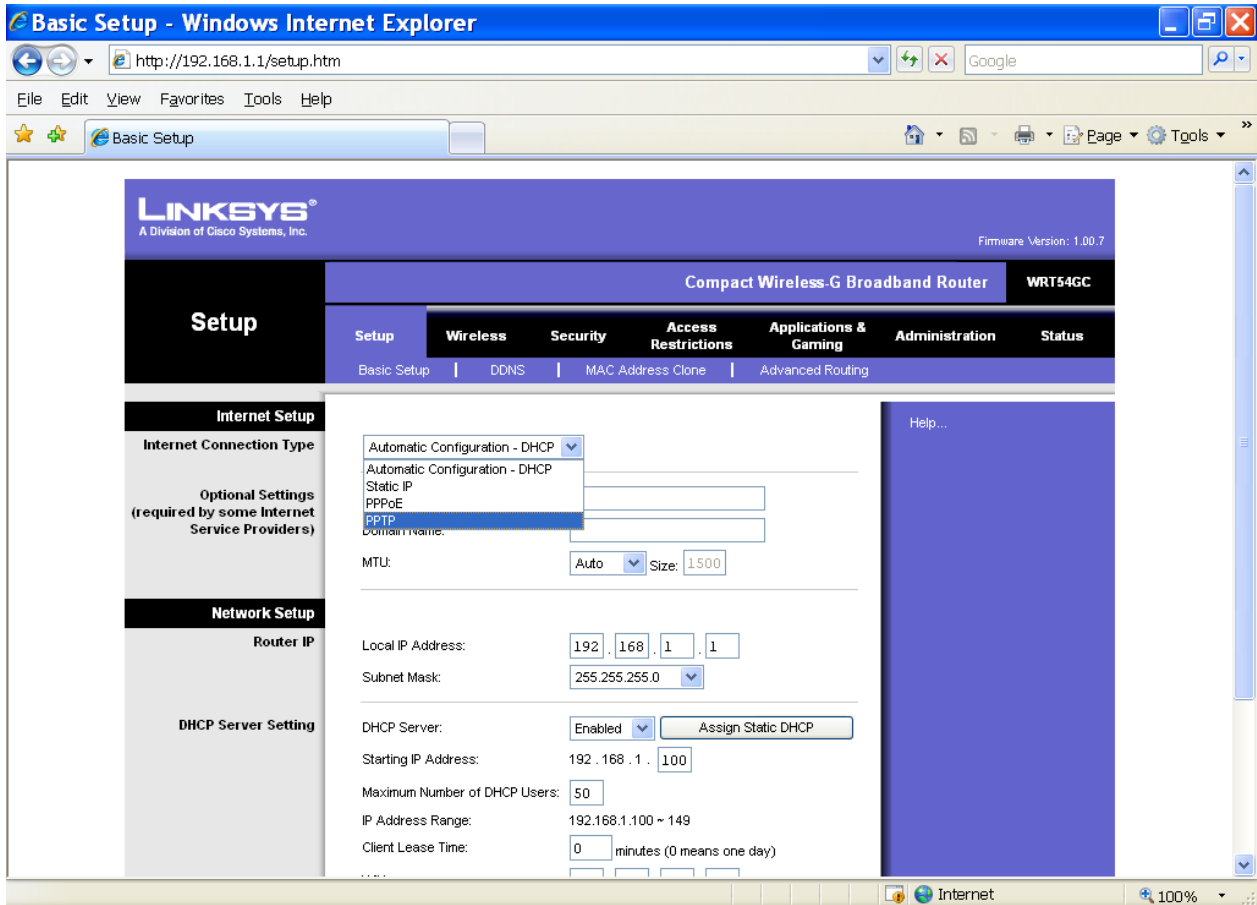


14 U polja **User name** i **Password** upišite podatke s kojima ste se i do sad spajali na internet (korisnik@ustanova.hr i Vašu lozinku)! Kliknite **Connect** da bi se spojili na internet!

Linksys WRT54GC router

1 Pokrenite internet preglednik (internet Explorer, Mozilla Firefox,...) i u polje za unos adrese upišite adresu Vašeg routera. Standardna adresa na **Linksys** routeru je: **192.168.1.1**

Upišite 192.168.1.1 (ili <http://192.168.1.1>) i otvorit će se ovakav prozor:



2 Kliknite na padajući izbornik (kao na slici) i odaberite **PPTP**

3 Polje **IP adresa** ostavite prazno!

4 Polje **subnet mask** ostavite prazno!

5 U polje **default gateway** upišite: **10.64.0.1**

6 U polja **username** i **password** upišite svoje korisničko ime i lozinku koje ste i do sada koristili za spajanje na XCARNet internet:

7

Ostala polja nemojte mijenjati. Kada ste završili s unosom, pritisnite **save settings** da bi uređaj zapamtio podatke.

Basic Setup - Windows Internet Explorer

http://192.168.1.1/setup.htm

File Edit View Favorites Tools Help

Basic Setup

LINKSYS
A Division of Cisco Systems, Inc. Firmware Version: 1.00.7

Compact Wireless-G Broadband Router WRT54GC

Setup

Setup | **Wireless** | Security | Access Restrictions | Applications & Gaming | Administration | Status

Basic Setup | DDNS | MAC Address Clone | Advanced Routing

Internet Setup

Internet Connection Type: PPTP

IP Address: 0 . 0 . 0 . 0

Subnet Mask: 0 . 0 . 0 . 0

Default Gateway: 10 . 64 . 0 . 1

Username: korisnik@carnet.hr

Password:

Connect on Demand: Max Idle Time 30 Minutes

Keep Alive: Redial period 30 Seconds

Optional Settings (required by some Internet Service Providers)

Host Name: []

Domain Name: []

MTU: Auto Size: 1460

Network Setup

Router IP

Local IP Address: 192 . 168 . 1 . 1

Subnet Mask: 255.255.255.0

DHCP Server: Enabled Assign Static DHCP

Starting IP Address: 192 . 168 . 1 . 100

Maximum Number of DHCP Users: 50

IP Address Range: 192.168.1.100 ~ 149

Client Lease Time: 0 minutes (0 means one day)

WINS: 0 . 0 . 0 . 0

Time Settings

Time Zone: (GMT) Greenwich Mean Time: Dublin,Edinburgh,Lisbon,London

Automatically adjust clock for daylight saving changes.

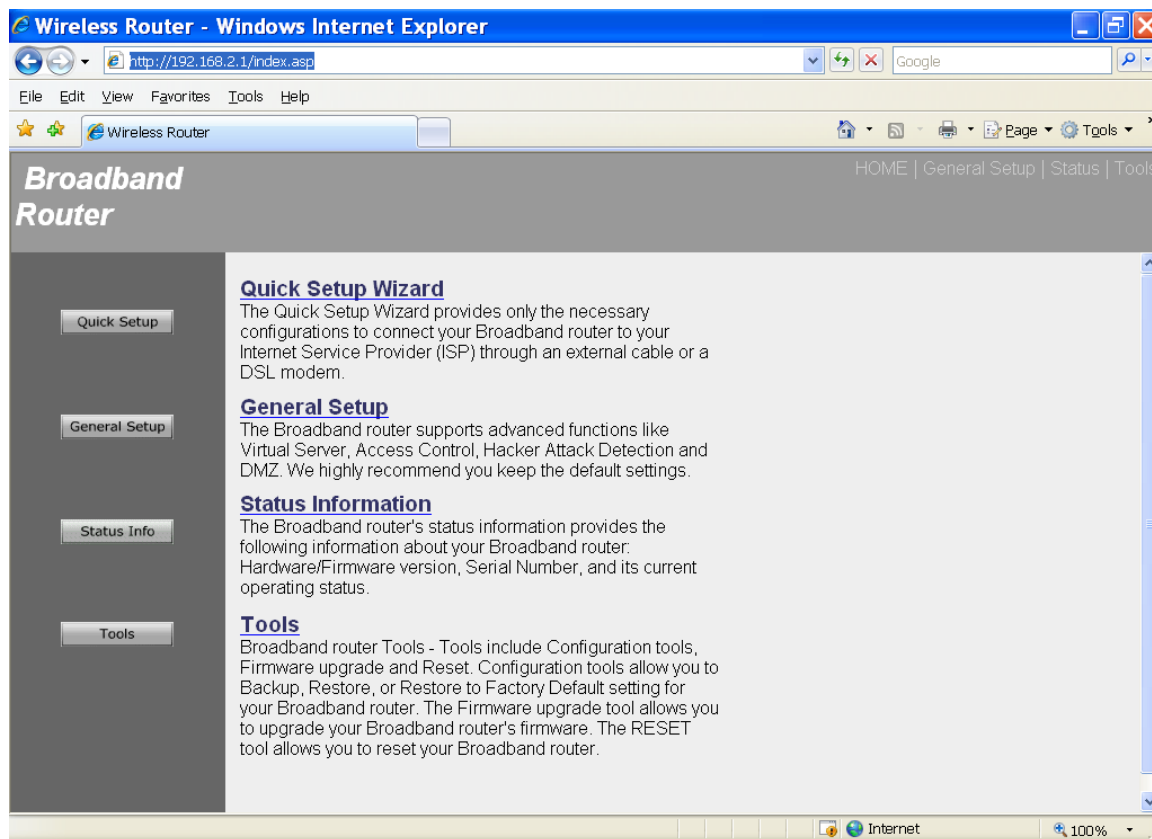
Save Settings **Cancel Changes**

Internet 100%

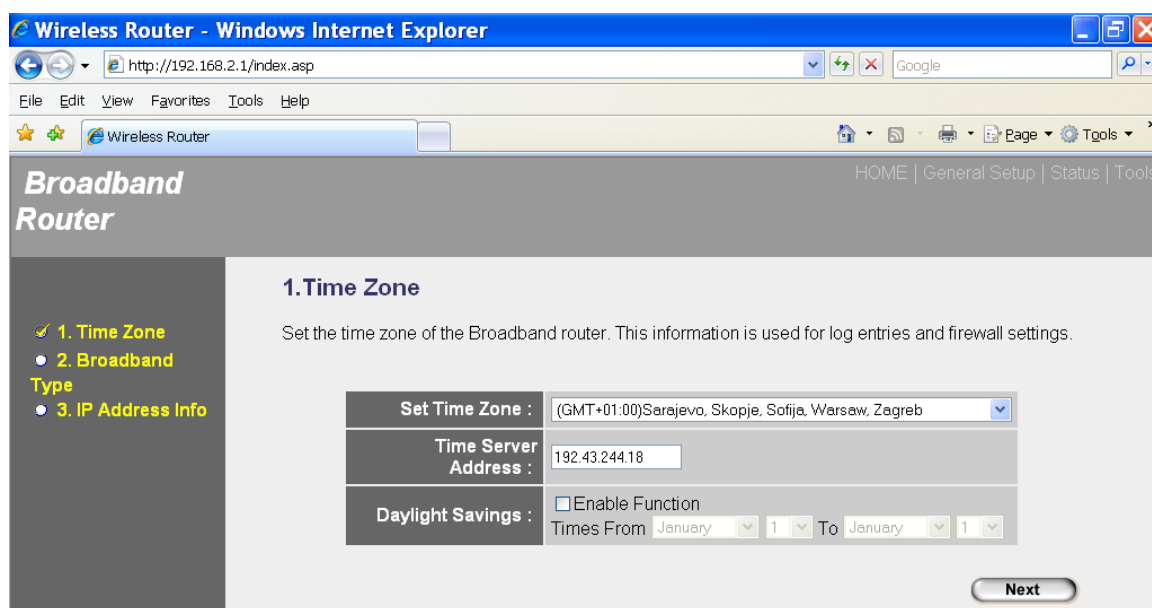
Canyon CN-WF514

1 Pokrenite internet preglednik (Internet Explorer, Mozilla Firefox,...) i u polje za unos adrese upišite adresu Vašeg routera. Standardna adresa na **Canyon** routeru je: **192.168.2.1**

Upišite 192.168.2.1 (ili <http://192.168.2.1>) i otvorit će se ovakav prozor:

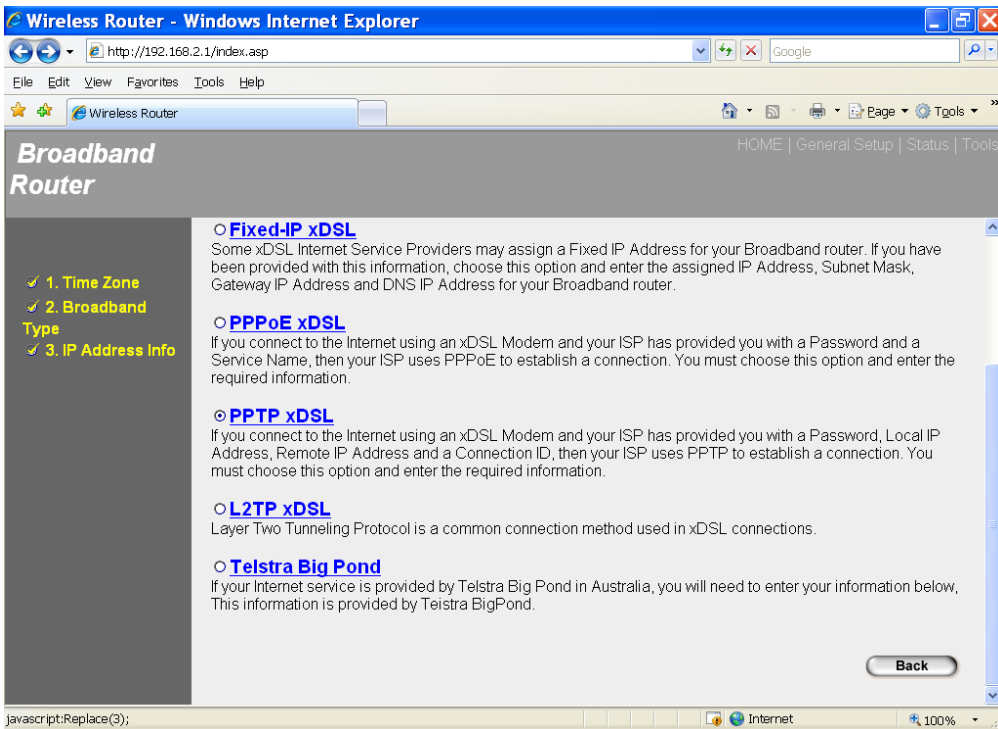


2 Kliknite na Quick Setup Wizard



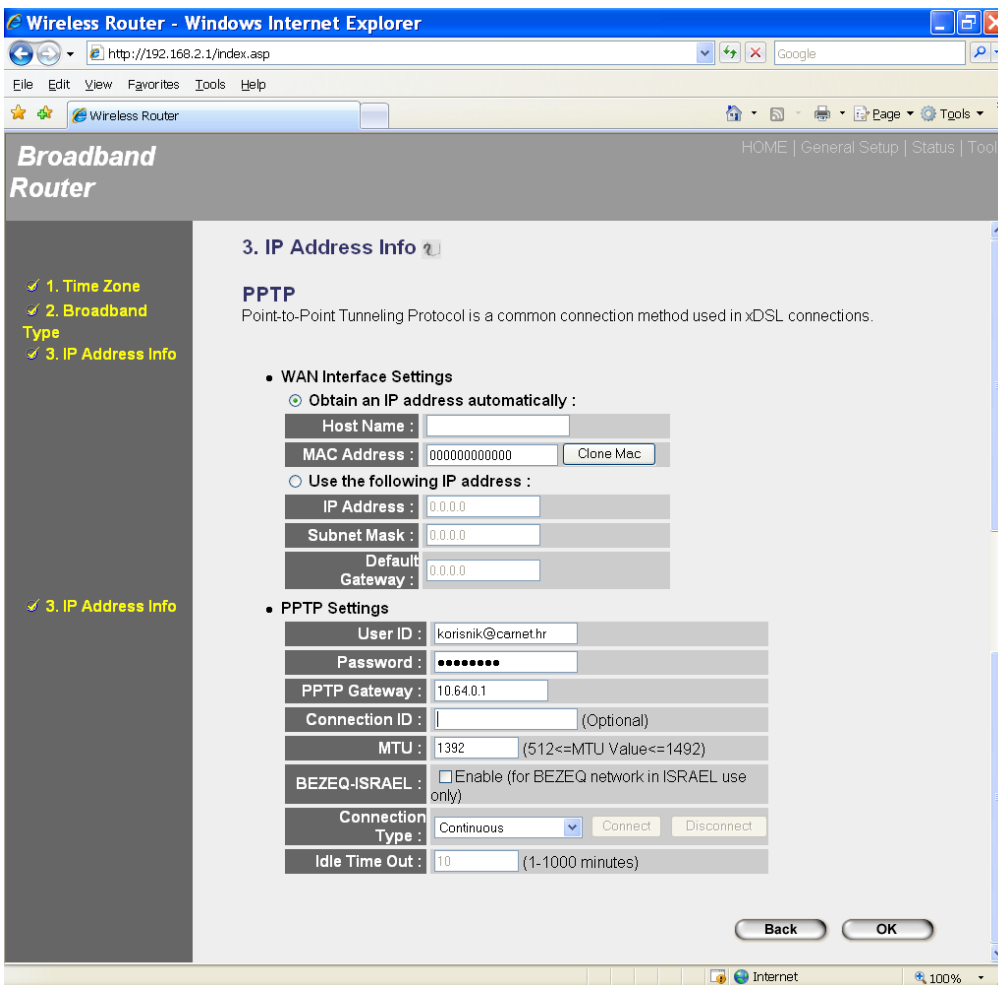
3

Kliknite na gumb Next i otvorit će Vam se sljedeći prozor:



4

Ovdje kliknite na **PPTP xDSL** i otvara se prozor za unos PPTP podataka



5

WAN interface settings:

Označite **Obtain an IP address automatically** i ne mijenjajte polja **Host Name** i **MAC Address**

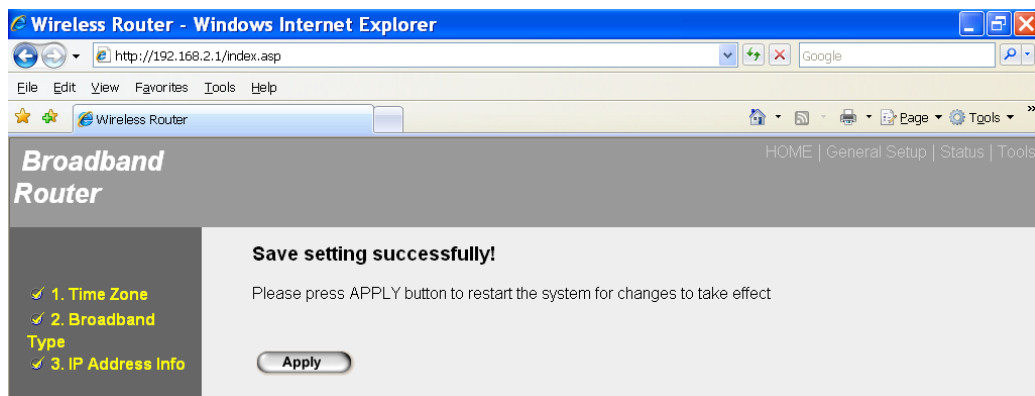
PPTP settings:

6 U polje **user ID** upišite svoje korisničko ime u obliku: korisnik@ustanova.hr

7 U polje **password** upišite svoju lozinku

8 U polje **PPTP gateway** upišite: **10.64.0.1**

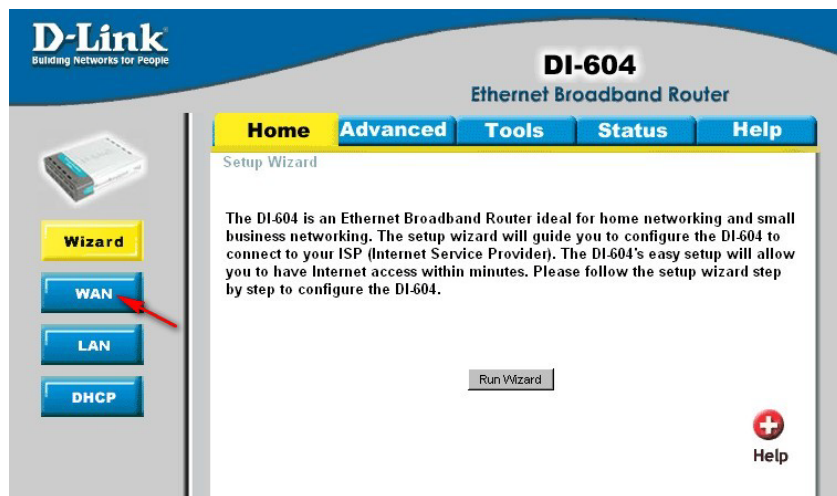
9 Ostala polje ne mijenjajte i kliknite na **OK!**



D-Link DI-604

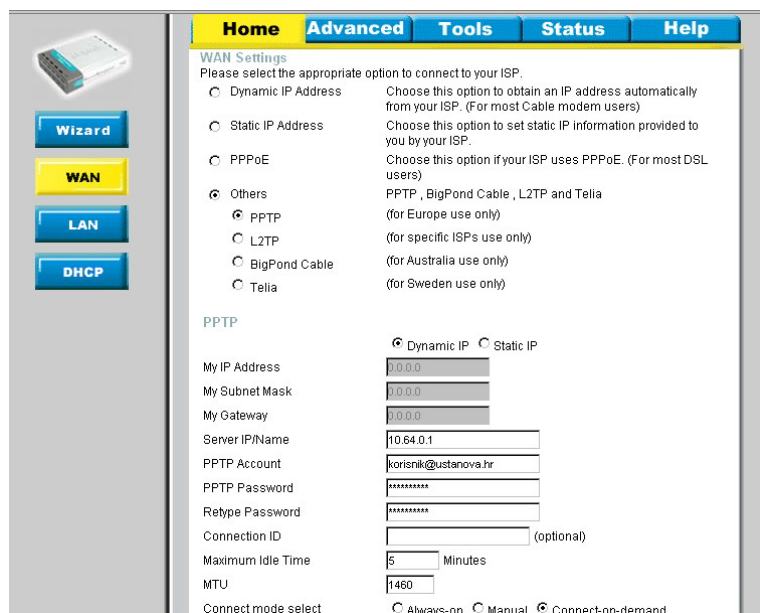
- 1 Pokrenite internet preglednik (Internet Explorer, Mozilla Firefox,...) i u polje za unos adrese upišite adresu Vašeg routera. Standardna adresa na **D-Link** routeru je: **192.168.0.1**

Upišite 192.168.0.1 (ili <http://192.168.0.1>) i otvorit će se ovakav prozor:



- 2 Kliknite na **WAN**

- 3 Zatim na **Others** i otvorit će se novi dio unutar prozora s opcijama za PPTP. Označite, ako već nije **PPTP**



- 4 Označite, ako već nije, **Dynamic IP**

- U polje **Server IP/Name** upišite: **10.64.0.1**
- U polje **PPTP Account** upišite svoje korisničko ime u obliku: korisnik@ustanova.hr
- U polje **PPTP Password** upišite svoju lozinku.

- 5 Kada ste unijeli sve podatke kliknite na **Apply**

